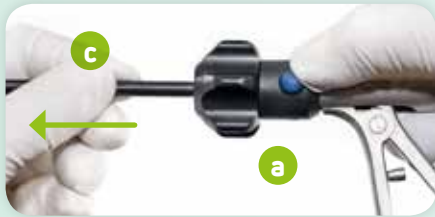


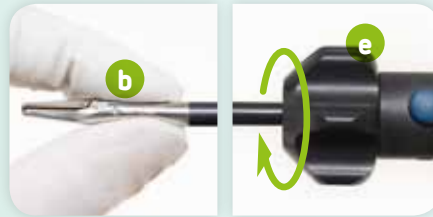
## LAP BiSect scissors

### Dismantling the product

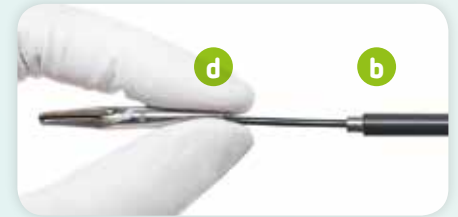
*The product must be cleaned and disinfected in disassembled condition with jaws opened.*



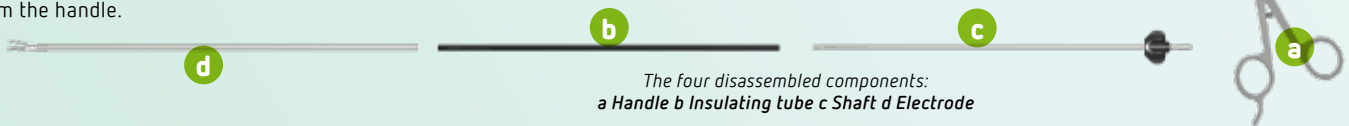
- 1 Pull out the connecting cable (no illustration).
- 2 Hold the handle (a) in such a way that the moving handle is not obstructed. Press the push-button and withdraw the shaft (c) from the handle.



- 3 Hold the electrode jaws (b) between your thumb and index finger. Screw the electrode out of the shaft by turning the rotary wheel (e) (approx. 6 turns).



- 4 Withdraw the electrode (d) from the shaft.
- 5 Pull the insulating tube (b) off the shaft.



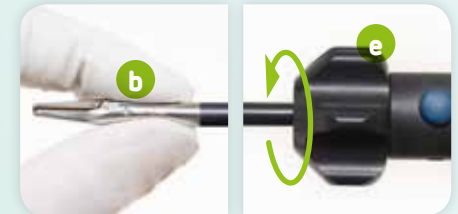
### Assembling the product



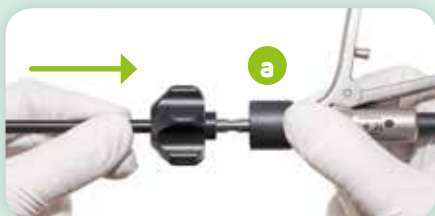
- 1 Push the insulating tube (b) onto the shaft (c).



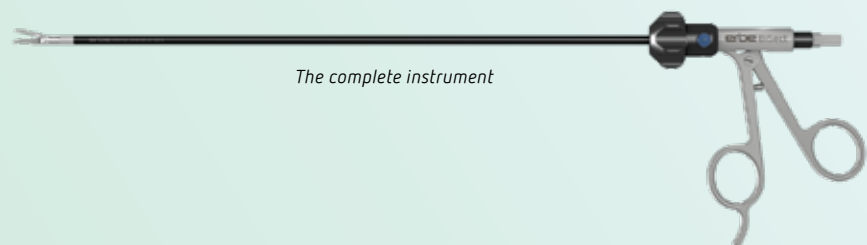
- 2 Insert the electrode (d) into the shaft up to the stop position.










- 3 Hold the electrode jaws (b) between your thumb and index finger. Screw the electrode in, tightening it well, by turning the rotary wheel (e) (approx. 6 turns); do not jam the thread.



- 4 Hold the handle (a) just like you would hold a pen in such a way that the handles face upwards and the moving handle is not obstructed, and press the push-button. Insert the shaft into the handle (a) until it snaps into place, without jamming it.



*For the complete notes on use, refer to [erbe-med.com](http://erbe-med.com)*

Insert for LAP BiSect scissors Micro ( <i>complete instrument Micro, no. 20195-204</i> )		Pieces	No.
Insert for LAP BiSect Micro, $\varnothing$ 5 mm, length 350 mm		1	20195-206
Insert for LAP BiSect scissors Macro ( <i>complete instrument Macro, no. 20195-205</i> )		Pieces	No.
Insert for LAP BiSect Macro, $\varnothing$ 5 mm, length 350 mm		1	20195-207
Individual components for LAP BiSect Micro and Macro scissors		Pieces	No.
Shaft tube for LAP BiSect Micro and Macro, $\varnothing$ 5 mm, length 350 mm		1	20195-208
Insulated tube for LAP BiSect Micro and Macro, $\varnothing$ 5 mm, length 350 mm		1	20195-209
Handle for LAP BiSect Micro and Macro		1	20195-210
Reconditioning accessories for LAP BiSect Micro and Macro scissors		Pieces	No.
Cleaning brush, length 650 mm, for manual cleaning and disinfection		1	20191-279
Rinsing tube with Luer Lock connector, length 500 mm, for cleaning and disinfection by machine		1	20195-201